

**SAFETY & TRUST COMPANY**



# **D-TECH**

## **COMPANY PROFILE**



# CONTENTS

## 01

---

### INTRODUCE

- PRINCIPLE OF COMPANY
- SUMMARY
- HISTOTY
- ORGNAIZTION
- EQUIPMENT LIST
- MAJOR TASK
- KEY PERFORMANCE
- MAJOR CUSTOMER
- LONG TERM VISION

## 1] MANAGEMENT PHILOSOPHY

DTECH has grown steadily with accurate technology as well as safety. Continuous advances in service technology make it the most competitive company in the industry I'm getting on my toes. We will repay you with D-Tech's passion that extends toward the wide sea.

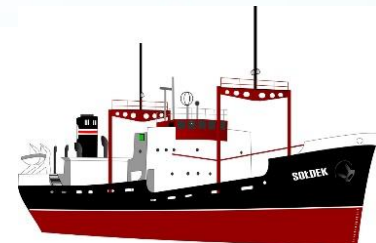
### PRINCIPLE

# TRUST

# PASSION

# SAFETY

Leads to safer and more trust.



## 2] SUMMARY OF COMPANY

### COMPANY NAME

DTECH CORPORATION.

### ADDRESS

22, Haeyang-ro, Yeongdo-gu, Busan, Republic of Korea

### ESTABLISHED DATE

JANUNARY. 2023

### MAJOR BUSINESS

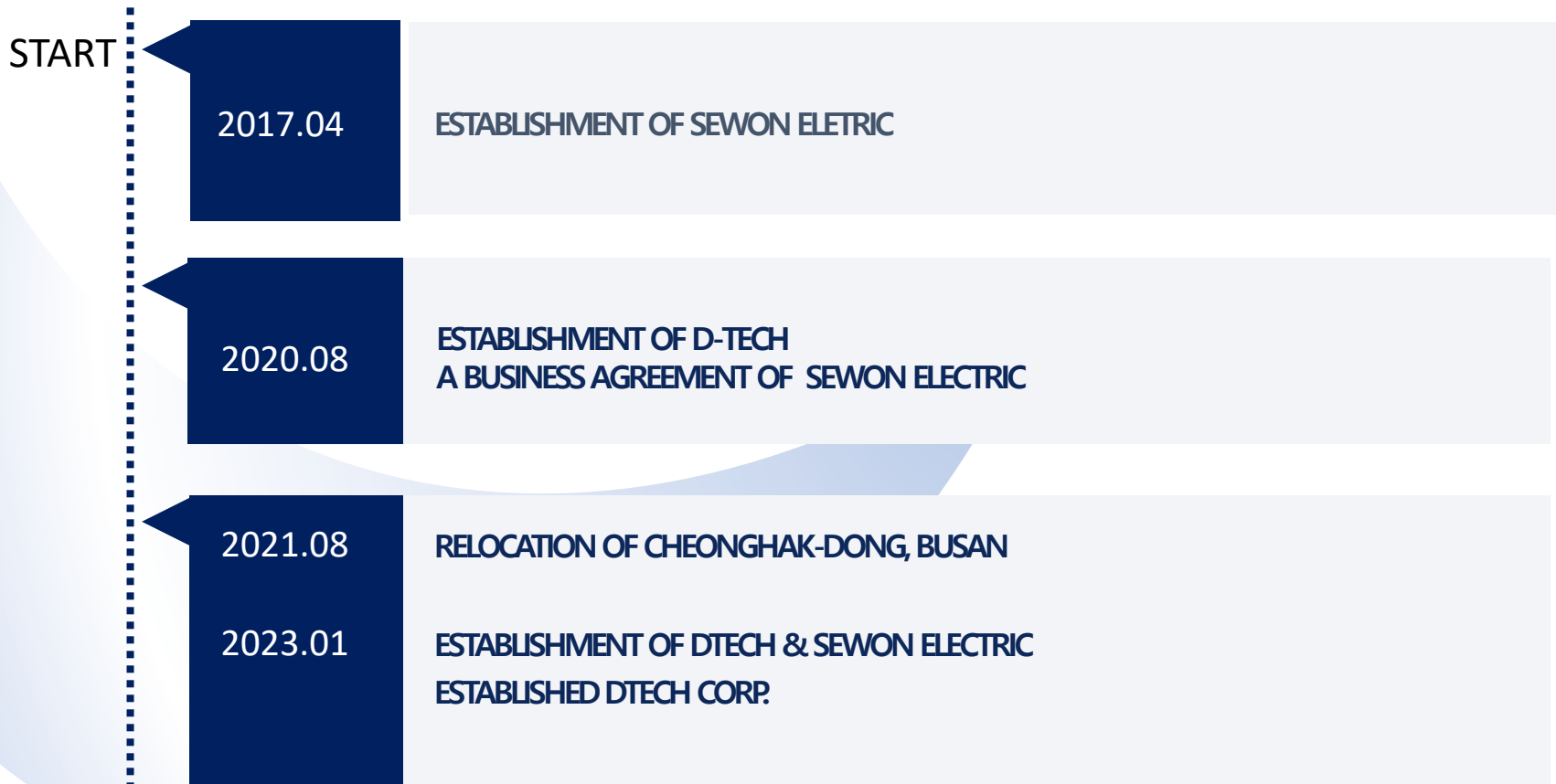
Ship repair, ship renovation, electrical appliance  
accessory manufacturing, ship supply

### CAPITAL

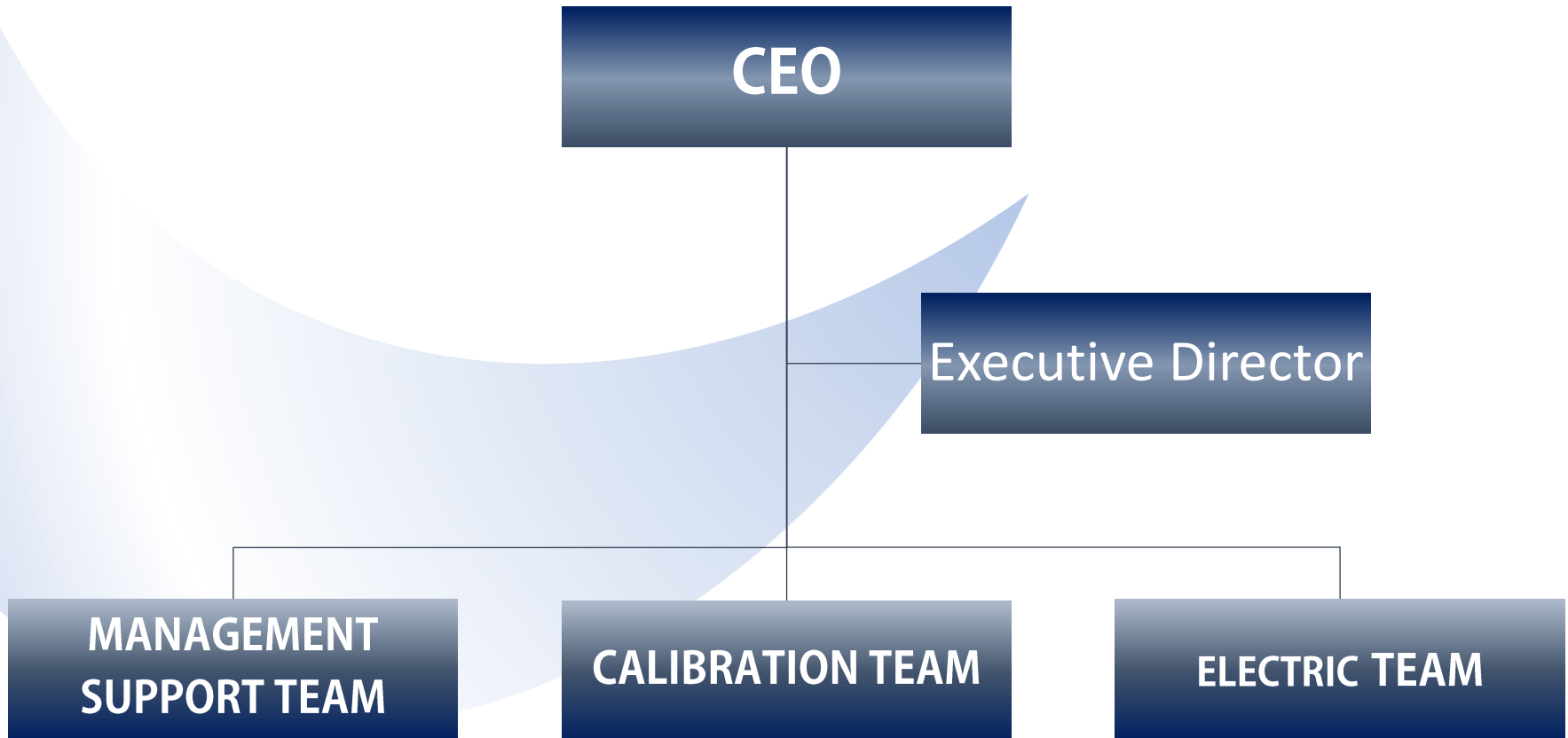
KRW 600,000,000



### 3] HISTORY OF COMPANY



## 4] ORGANIZATION CHART



## 5] A MAJOR TASK

### **ELECTRIC & REPAIRING**

- SHIP REPAIR ELECTRICITY
- A.C.B TRIP TEST
- A.M.P RETROFIT
- M.S.B.D INSPECTION
- PANEL PRODUCTION
- SAFETY DEVICE INSPECTION
- MODIFIED INSTALLATION
- GENERATOR & MOTOR REPAIRING
- ELECTRIC SPARE PARTS
- CLASSIFICATION SURVEY

### **CALIBRATION & INSPECTION**

- CARGO MONITORING SYSTEM
- O.D.M,E
- FIRE DETECTION SYSTEM
- GAS DETECTOR & SYSTEM
- VAPOUR EMISSION CONTROL SYS.
- OILY WATER SEPARATOR
- U.T,I METER
- LEVEL ALARM DEVICE
- SPARE PARTS
- CLASSIFICATION SURVEY

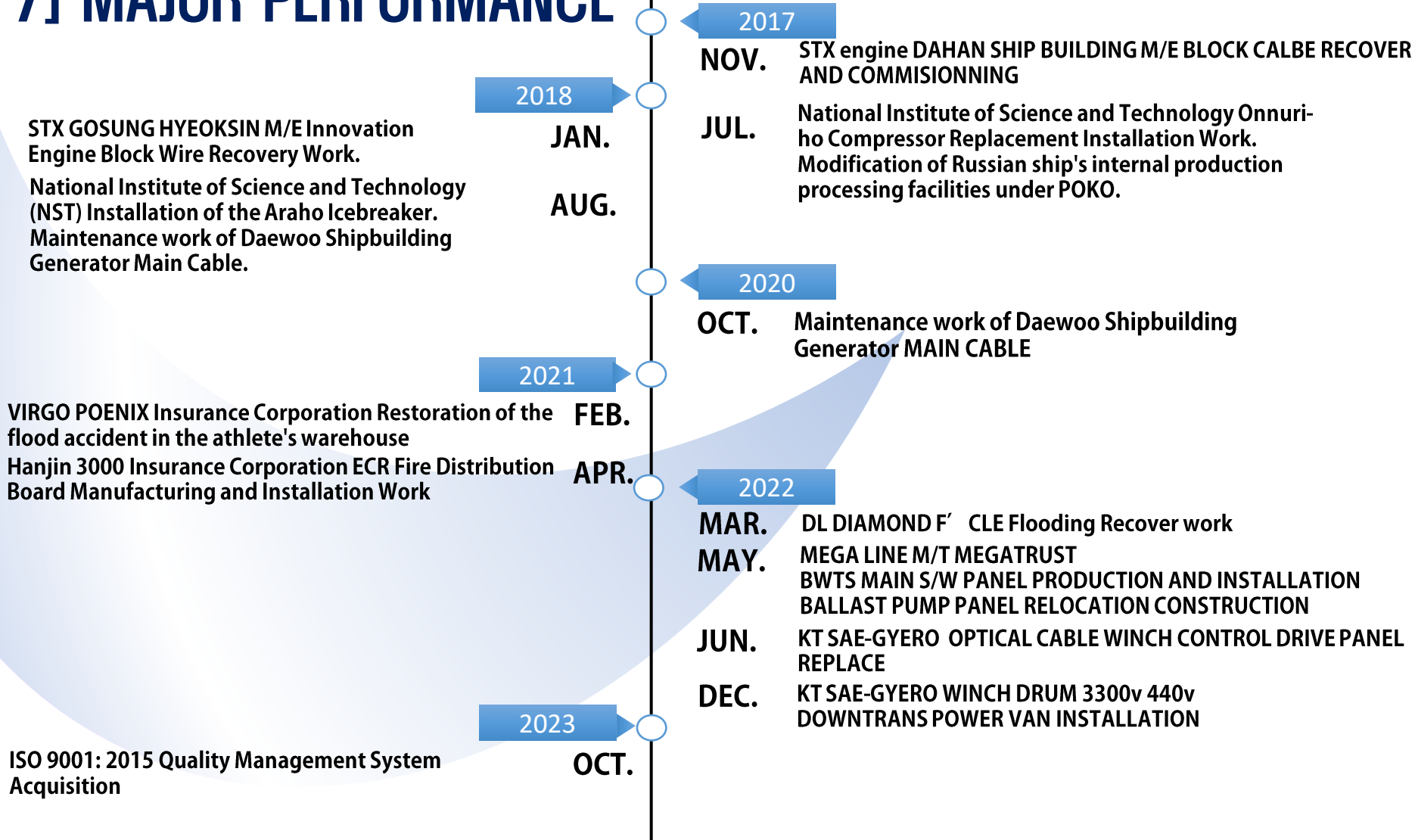
## **6] EQUIPMENT LIST**

- **ACB ACTUAL LOAD TEST 2000A**
- **ACB EQUIPMENT(HYUNDAI HAT, HYUNDAI HIAN, HYUNDAI UAN, MITUBISHI, LS,TERASAKI)**
- **M/E EXHAUST TEMP. MEASURING INSTRUMENT**
- **GENERATOR INTERNAL PRESS. TESTER (5000V)**
- **MOTOR DRYING RACK (1200 x 1200 x 1200)**
- **MOTOR COMMISSIONING EQUIPMENT(200kw)**





### 7] MAJOR PERFORMANCE



### 8] MAJOR CUSTOMER



三三 三富海運株式會社

stx Marine Service





## **9] LONG TERM VISION**

### **MANAGEMENT OF VESSLE**

**Through continuous ship repair history management,  
Rapid response to shipowner requirements**

**New equipment and systems  
Education and Study**

**Accurate business processing ensures reliability of each Resister**

**Customer Requirements  
Fast day/night response**

### **SAFETY OPERATION**

**Each PART team leader-level specialized field  
Having years of experience**

**Securing various TEST equipment**

**Securing employees' expertise through various educational support**

**Employee safety training and equipment provision**

## 10] CERTIFICATION STATUS



**KAB-QC-08**

**KS Q ISO 9001 / ISO 9001  
APPROVED BY KOREAN REGISTER**

THANK YOU

**DTECH**

*22, HAEYANG-RO, Yeongdo-gu, Busan,  
Republic of Korea*

*TEL : 051 413 8247 FAX : 051 417 8247*

*E-MAIL : [dtech@dtechelec.com](mailto:dtech@dtechelec.com)*

*HOME PAGE : [www.dtechelec.com](http://www.dtechelec.com)*